



Upscale Apartments Cater To Busy Professionals

The Preserve At Indigo Run
Hilton Head Island, SC



This luxury apartment development, called The Preserve at Indigo Run on Hilton Head Island, South Carolina, is based on its architect's Big House® design which gives the appearance of a large single-family residence.

The six-unit buildings offer six different floor plans with a range of high-end features such as gourmet kitchens, computer and media centers, crown molding, roman tubs and built-ins.



This project had to abide by stringent local planning guidelines regarding exterior elevations and the preservation of trees and open space. The major goals of the project were to provide the market with a beautiful living environment and to create an economically successful development that had as little adverse impact on the land as possible.

The refined elegance of Georgian architecture was chosen for the exterior and the direct-access garages with ground-floor entries were placed on different sides of the structure to reduce the impact on elevations. The development features winding roads, a resort style swimming pool with a cabana house and a flower cutting garden for residents to enjoy.





The successful marriage of existing site features combined with an innovative architectural solution make this an exceptional multifamily community that conveys an attractive and positive image to its residents and the surrounding community.

Type of Project:
Luxury Apartments

Architect:
Humphreys & Partners Architects, L.P.

Size of project:
252 units

Developer:
Sterling Group

Size range of units:
875-1,872 sq.ft.

Contractor:
Sterling Services II, LLC

Price range of units:
\$1,301/month average

Landscape Architect:
Design Scapes

Cost per sq.ft.:
\$53

Land Planner:
Wood + Partners Inc.

Density per acre:
7.6 units/acre

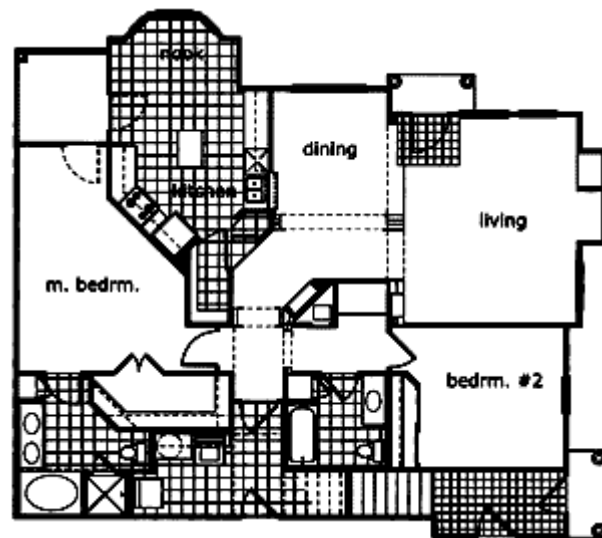
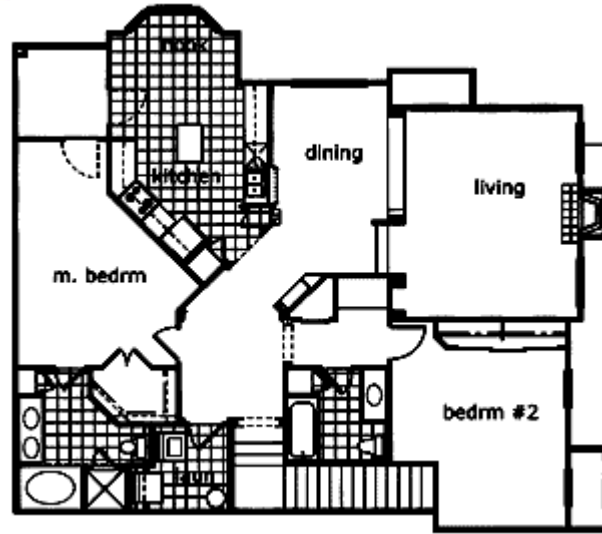
Awards/Honors:
Finalist, 2001 Pillars Of The Industry:
Best Garden Apt. (Secondary Mkt.)

SPECIFICATIONS

Roofing: Elk
HVAC: Rheem
Paint/Stain: Sherwin-Williams
Windows: Kelstar
Interior Doors: Miller Craft
Ceramic Tile: Viking
Carpeting: Shaw Manufacturing

Sinks/Tubs: American Standard
Toilets/Faucets: American Standard
Cabinets: Triangle Pacific
Countertops: Triangle Pacific
Range/Oven: Whirlpool
Refrigerator: Whirlpool
Dishwasher: Whirlpool





Source: Design/Build Business
Photos: Taylor Architectural Photography

Date: April 2001